

PLAN 1 (PRELIMINARY)

One Story • 1,989 Sq. Ft. • 3-4 Bedrooms • 2 Baths
Great Room • Kitchen with Island • 2-Bay Garage



FLOOR PLAN

Woodside Homes reserves the right to change elevations, specifications, materials and prices without notice. All square footages are approximate. Window location, porches, ceiling heights and room dimensions vary per elevation. The availability of certain options is subject to construction status and schedule. Optional features may be predetermined and included at additional cost on select homes. Renderings are artist's conception only.



WoodsideHomes.com/SoCal
29209 Date Palm Lake Elsinore, CA 92530
MyNewHome-Socal@woodsidehomes.com
951-777-2525

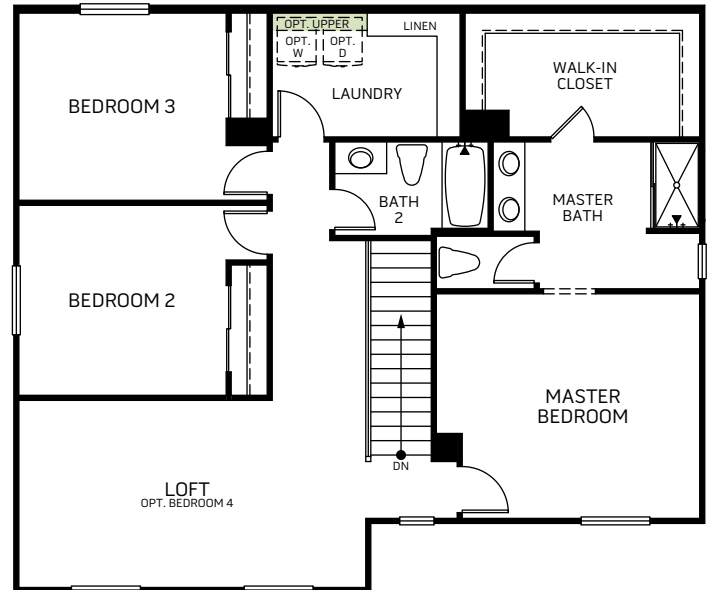


PLAN 2 (PRELIMINARY)

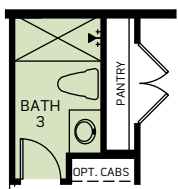
Two Story • 2,105 Sq. Ft. • 3-5 Bedrooms • 2.5-3 Baths
Living Room • Kitchen with Island • 2-Bay Garage



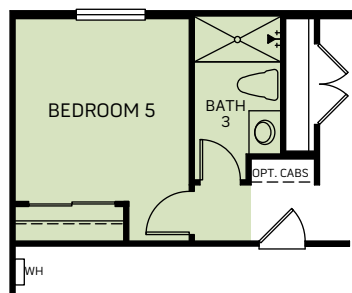
FIRST FLOOR



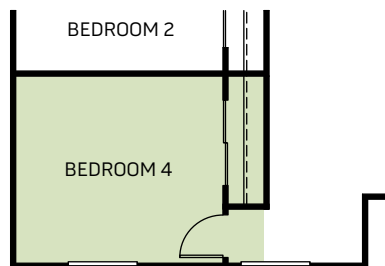
SECOND FLOOR



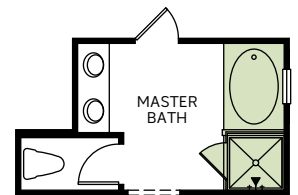
OPT. BATH 3



OPT. BEDROOM W/ BATH 3



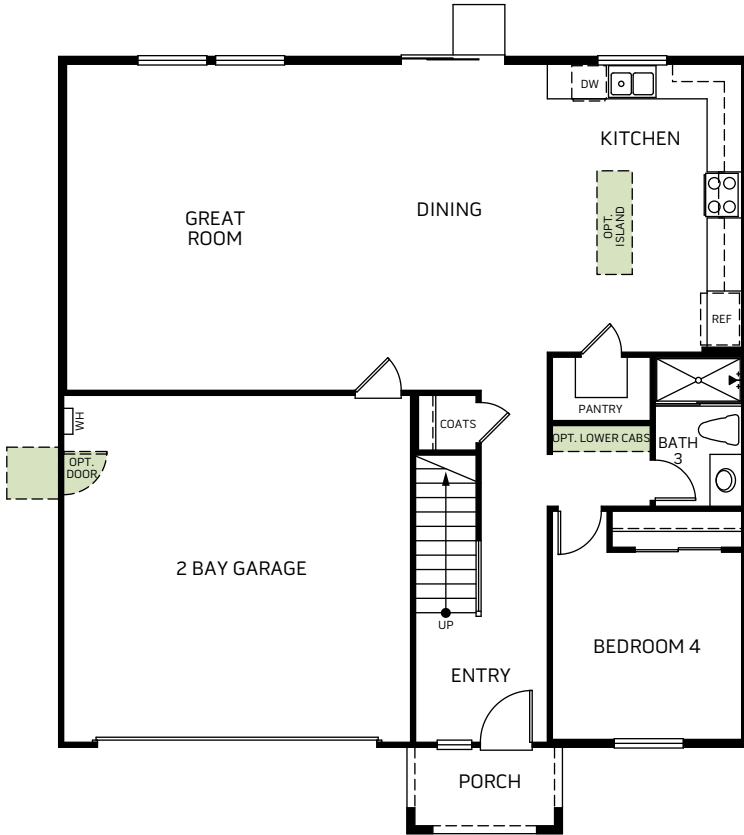
OPT. BEDROOM 4



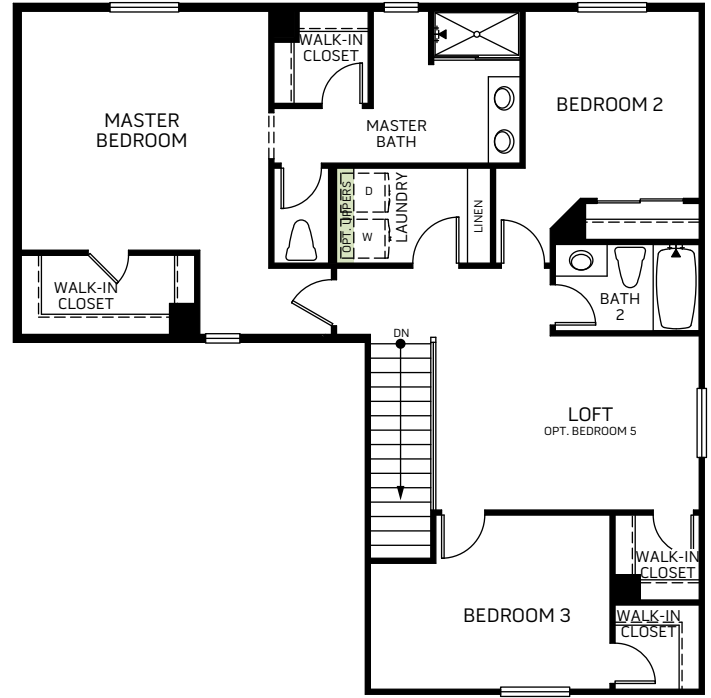
OPT. TUB/SHOWER AT MASTER BATH

PLAN 3 (PRELIMINARY)

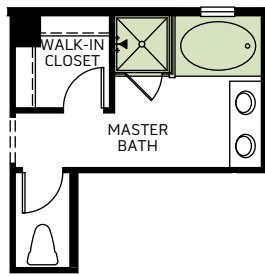
Two Story • 2,322 Sq. Ft. • 4-5 Bedrooms • 3 Baths
Great Room • Kitchen with Island • 2-Bay Garage



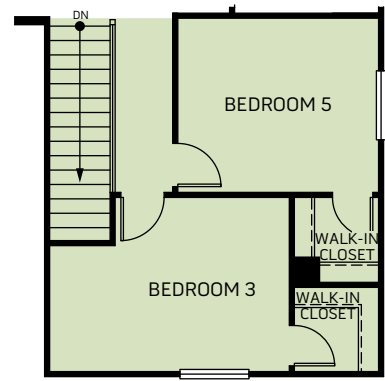
FIRST FLOOR



SECOND FLOOR



OPT. TUB/SHOWER
AT MASTER BATH



OPT. BEDROOM 5

Woodside Homes reserves the right to change elevations, specifications, materials and prices without notice. All square footages are approximate. Window location, porches, ceiling heights and room dimensions vary per elevation. The availability of certain options is subject to construction status and schedule. Optional features may be predetermined and included at additional cost on select homes. Renderings are artist's conception only.



WoodsideHomes.com/SoCal
29209 Date Palm Lake Elsinore, CA 92530
MyNewHome-Socal@woodsidehomes.com
951-777-2525

